








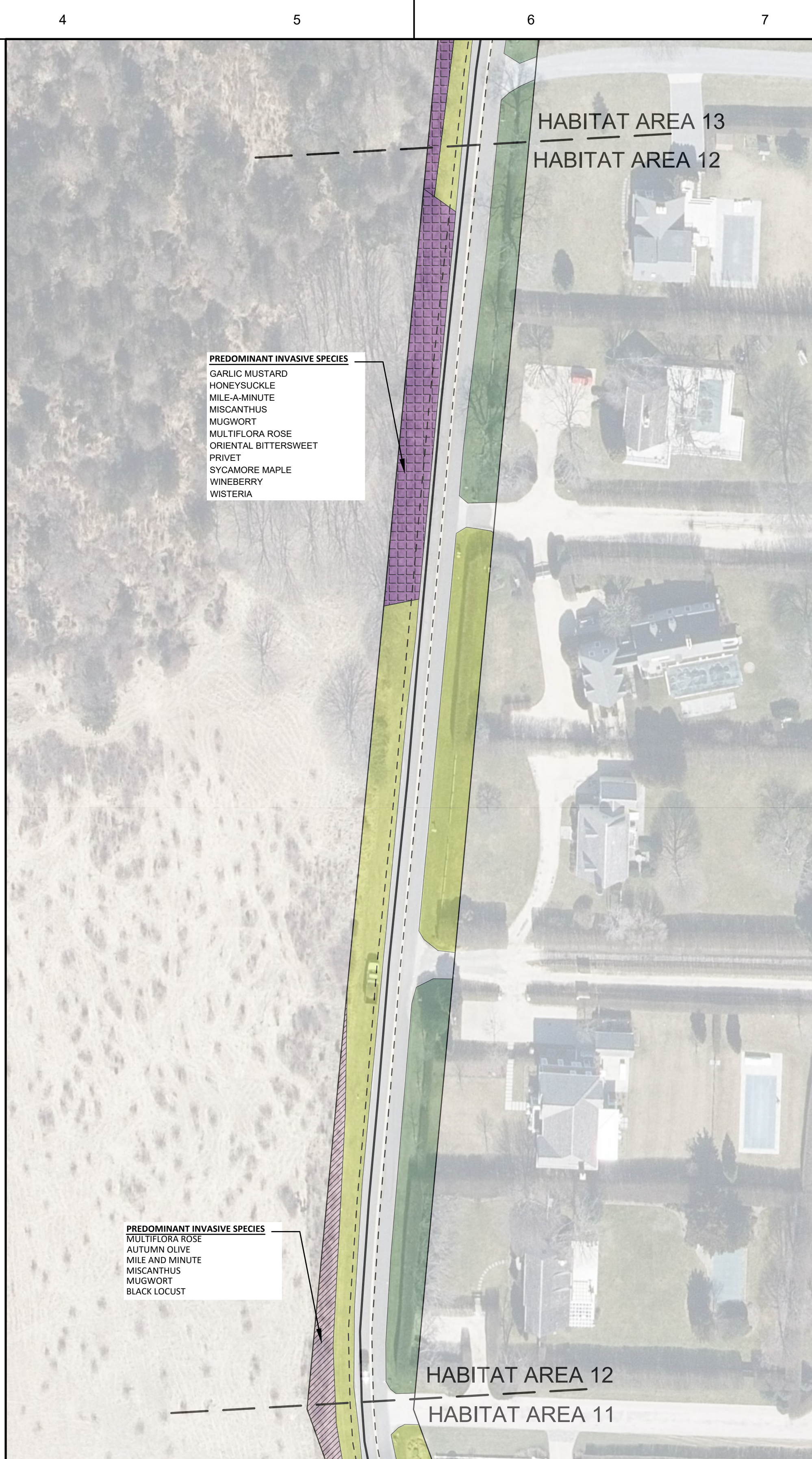



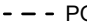




HABITAT AREA 11

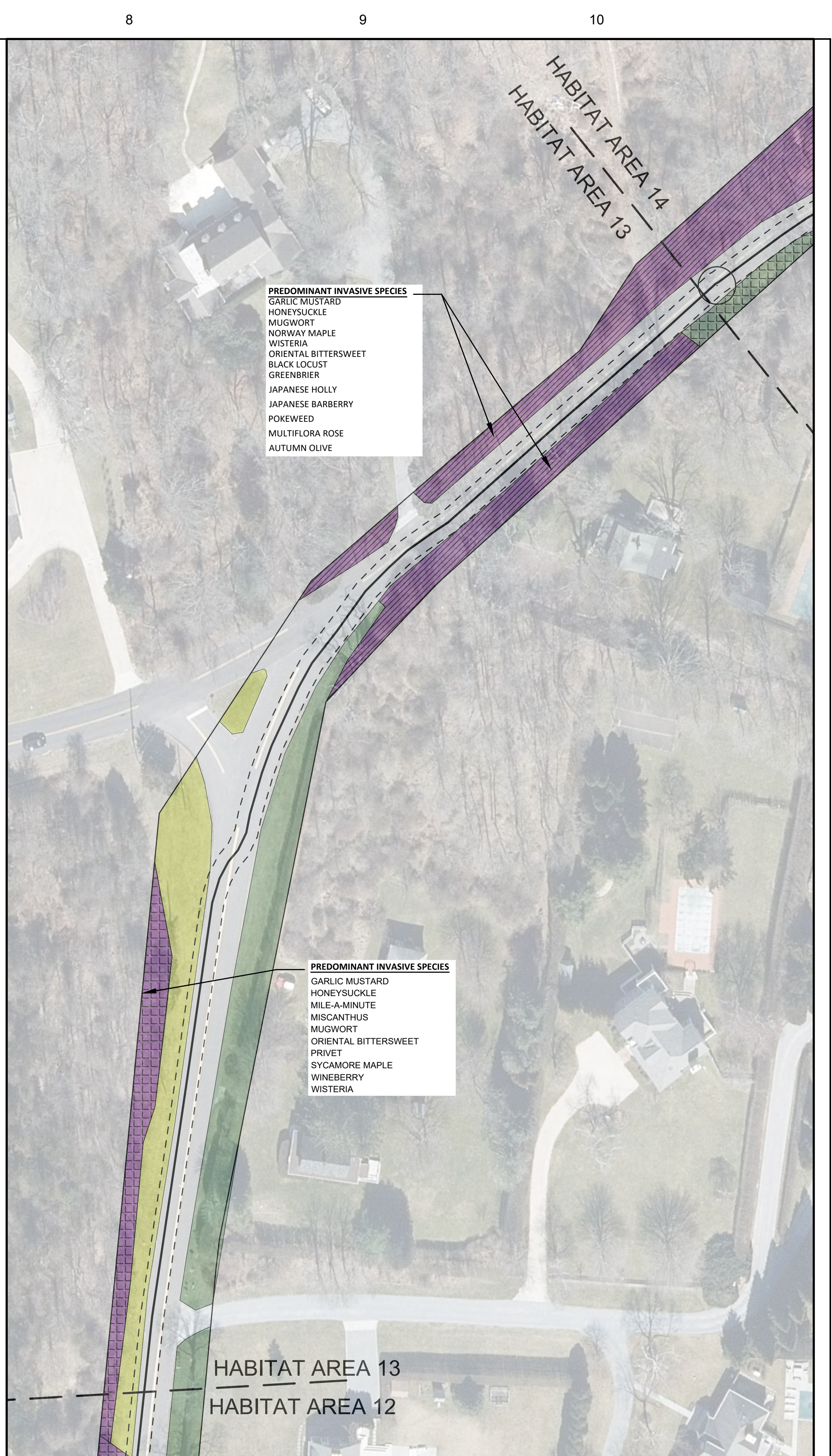
HABITAT CLASSIFICATION LEGEND			
	MOWED LAWN		SUCCESSIONAL SHRUBLANDS
	MOWED LAWN WITH TREES		SUCCESSIONAL SOUTHERN HARDWOODS
	MOWED ROADSIDE		HIGH QUANTITY OF INVASIVE
	COASTAL OAK FOREST		LOW QUANTITY OF INVASIVE
	PITCH PINE-OAK FOREST		

HABITAT MAPPING BASED ON FIELD VISIT AND VERIFICATION BY NPV ON AUGUST 25, 2023

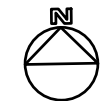


HABITAT AREA 12

LEGEND	
	PROPOSED TRANSMISSION LINE
	POTENTIAL AREA OF TRANSMISSION LINE DISTURBANCE
	PROPOSED SPLICE VAULT LOCATION
	RIGHT OF WAY
	PROPERTY BOUNDARY
	PAGE MATCH LINE



HABITAT AREA 13



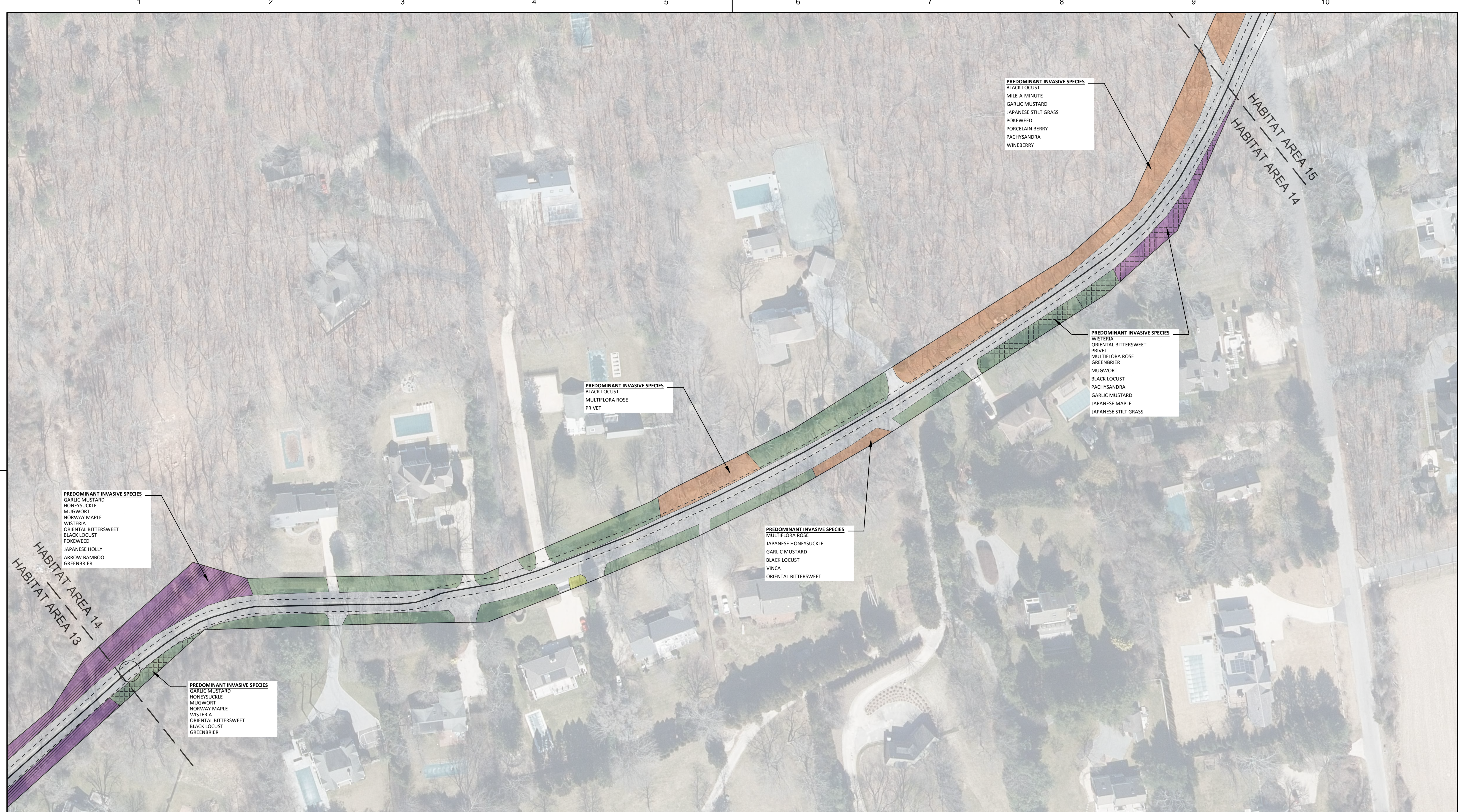
Long Island Power Authority  
SOUTHAMPTON – DEERFIELD

138KV TRANSMISSION LINE

SOUTHAMPTON TO DEERFIELD  
138KV TRANSMISSION LINE (OPERATED AT 69KV)  
HABITAT EXHIBIT

  
PSEG LONG ISLAND  
175 East Old Country Road  
Rockville, New York





HABITAT AREA 14

**HABITAT CLASSIFICATION LEGEND**

MOWED LAWN	SUCCESSIONAL SHRUBLANDS
MOWED LAWN WITH TREES	SUCCESSIONAL SOUTHERN HARDWOODS
MOWED ROADSIDE	HIGH QUANTITY OF INVASIVE
COASTAL OAK FOREST	LOW QUANTITY OF INVASIVE
PITCH PINE-OAK FOREST	

**LEGEND**

- PROPOSED TRANSMISSION LINE
- POTENTIAL AREA OF TRANSMISSION LINE DISTURBANCE
- PROPOSED SPLICE VAULT LOCATION
- RIGHT OF WAY
- PROPERTY BOUNDARY
- PAGE MATCH LINE

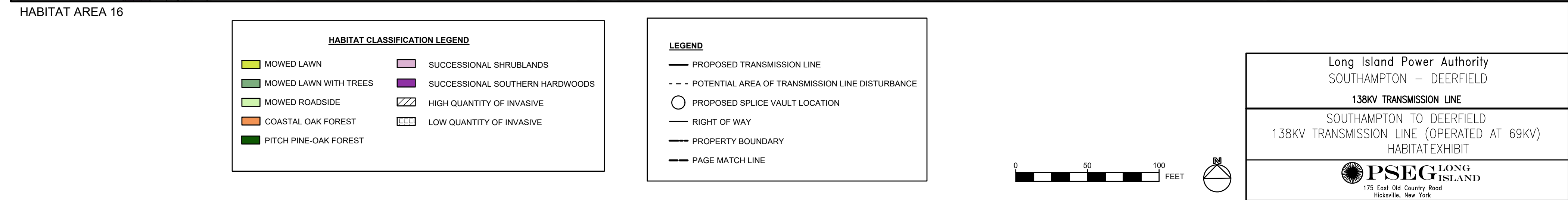
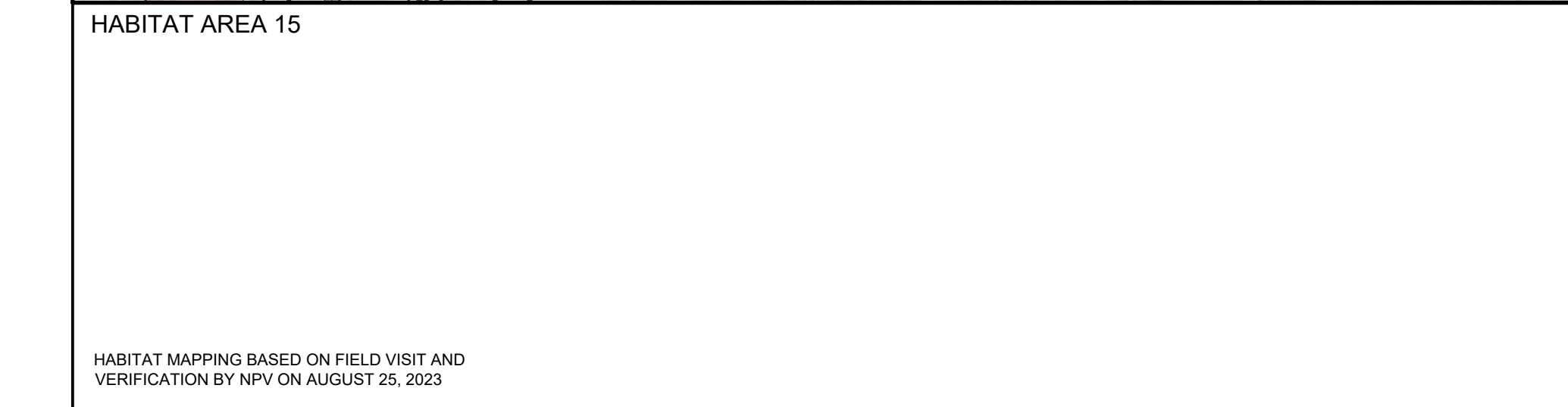
0 50 100 FEET

Long Island Power Authority  
SOUTHAMPTON – DEERFIELD  
138KV TRANSMISSION LINE  
SOUTHAMPTON TO DEERFIELD  
138KV TRANSMISSION LINE (OPERATED AT 69KV)  
HABITAT EXHIBIT

**PSEG** LONG ISLAND  
175 East Old Country Road  
Rockville, New York

HABITAT MAPPING BASED ON FIELD VISIT AND VERIFICATION BY NPV ON AUGUST 25, 2023

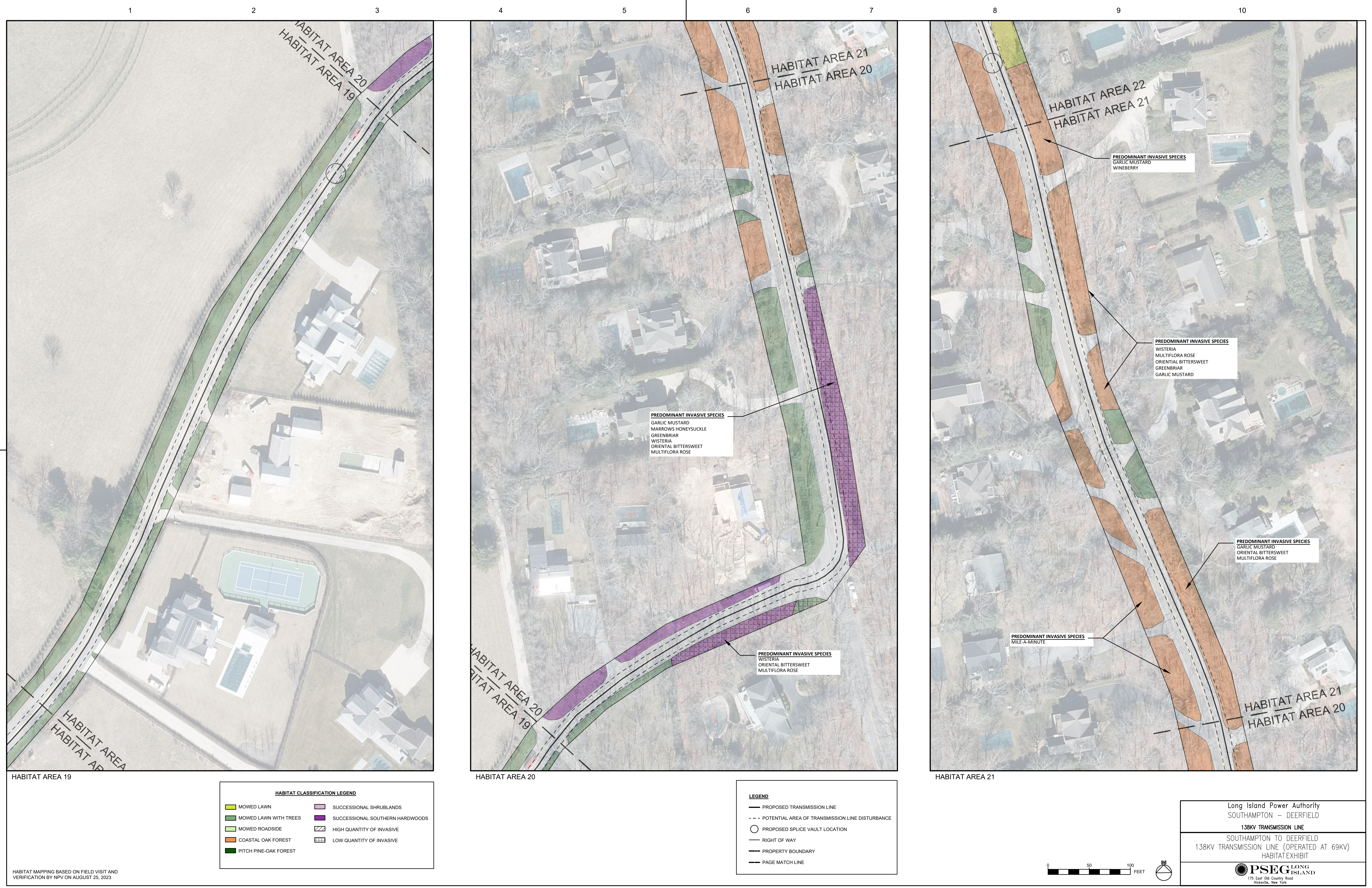




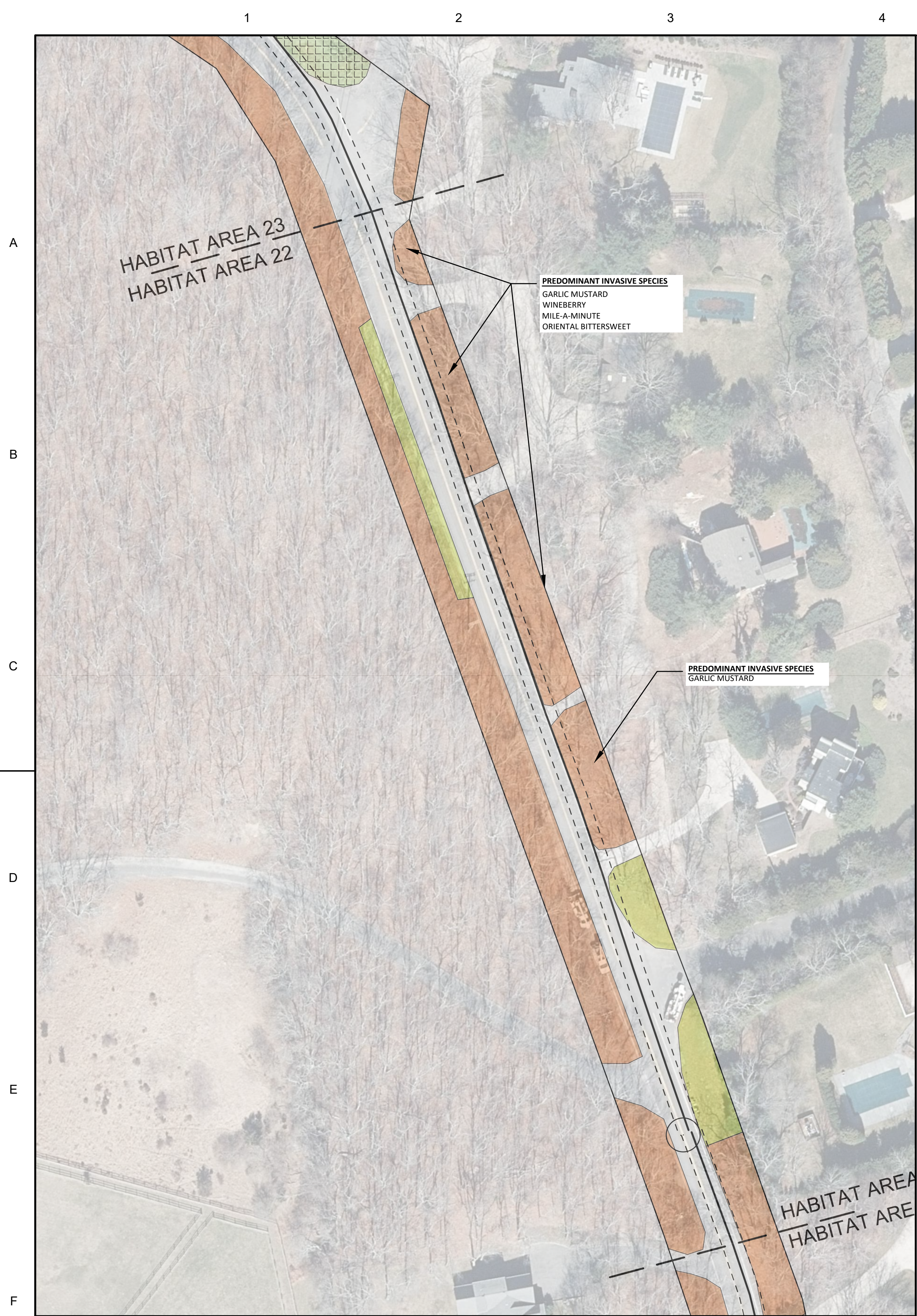








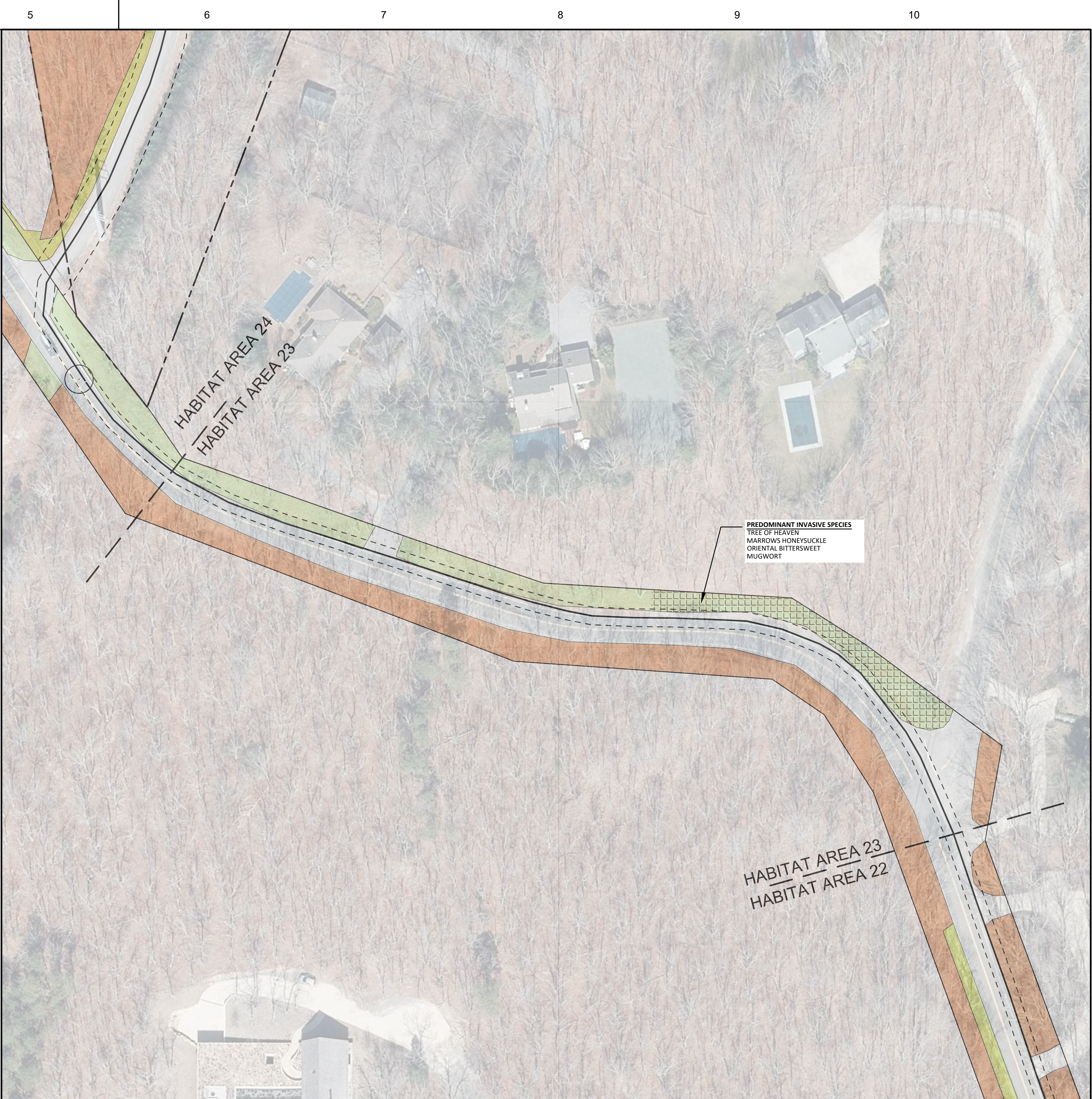




HABITAT AREA 22

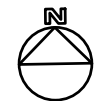
HABITAT MAPPING BASED ON FIELD VISIT AND VERIFICATION BY NPV ON AUGUST 25, 2023

HABITAT CLASSIFICATION LEGEND			
	MOWED LAWN		SUCCESSIONAL SHRUBLANDS
	MOWED LAWN WITH TREES		SUCCESSIONAL SOUTHERN HARDWOODS
	MOWED ROADSIDE		HIGH QUANTITY OF INVASIVE
	COASTAL OAK FOREST		LOW QUANTITY OF INVASIVE
	PITCH PINE-OAK FOREST		



HABITAT AREA 23

LEGEND	
	PROPOSED TRANSMISSION LINE
	POTENTIAL AREA OF TRANSMISSION LINE DISTURBANCE
	PROPOSED SPLICE VAULT LOCATION
	RIGHT OF WAY
	PROPERTY BOUNDARY
	PAGE MATCH LINE



Long Island Power Authority  
SOUTHAMPTON – DEERFIELD

138KV TRANSMISSION LINE

SOUTHAMPTON TO DEERFIELD  
138KV TRANSMISSION LINE (OPERATED AT 69KV)  
HABITAT EXHIBIT

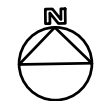
PSEG LONG ISLAND  
175 East Old Country Road  
Hicksville, New York





HABITAT CLASSIFICATION LEGEND	
TOTAL AREA DISTURBED BY TRANSMISSION LINE INSTALLATION	
<div></div>	MOWED LAWN EXISTING: ±261,000 SF POTENTIAL AREA OF DISTURBANCE: ±14,210 SF
<div></div>	MOWED LAWN WITH TREES EXISTING: ±306,834 SF POTENTIAL AREA OF DISTURBANCE: ±30,544 SF
<div></div>	MOWED ROADSIDE EXISTING: ±34,094 SF POTENTIAL AREA OF DISTURBANCE: ±3,334 SF
<div></div>	COASTAL OAK FOREST EXISTING: ±178,382 SF POTENTIAL AREA OF DISTURBANCE: ±9,286 SF
<div></div>	PITCH PINE- OAK FOREST EXISTING: ±10,426 SF POTENTIAL AREA OF DISTURBANCE: ±0 SF
<div></div>	SUCCESIONAL SHRUBLANDS EXISTING: ±11,729 SF POTENTIAL AREA OF DISTURBANCE: ±0SF
<div></div>	SUCCESIONAL SOUTHERN HARDWOODS EXISTING: ±127,117 SF POTENTIAL AREA OF DISTURBANCE: ±3,501 SF
<div></div>	HIGH QUANTITY OF INVASIVE EXISTING: ±70,966 SF
<div></div>	LOW QUANTITY OF INVASIVE EXISTING: ±58,902 SF

LEGEND	
<div></div>	PROPOSED TRANSMISSION LINE
<div></div>	POTENTIAL AREA OF TRANSMISSION LINE DISTURBANCE
<div></div>	PROPOSED SPLICE VAULT LOCATION
<div></div>	RIGHT OF WAY
<div></div>	PROPERTY BOUNDARY
<div></div>	PAGE MATCH LINE


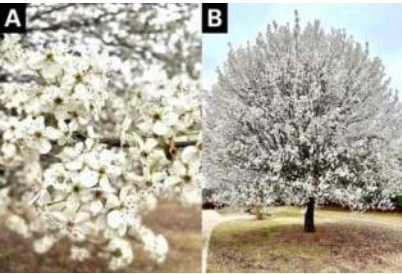




ATTACHMENT 2 – Identification Guide for Invasive  
Species Previously Identified Along the Certified Route



*Identification Guide for Invasive Species Previously Identified Along the Certified Route*

Invasive Plant Species Identification		
Trees		
 <p>(Photo by Richard, S.)</p>	<p>Black locust (<i>Robinia pseudoacacia</i>)</p>	<p>Regulated in the state of New York (NYS). Fragrant white flowers. Common in disturbed areas; toxic if ingested (Taylor, D.) (Cope J.A. and Winch Jr, F.E.).</p>
 <p>(Photo by Oten, K)</p>	<p>Bradford pear (<i>Pyrus calleryana</i> 'Bradford')</p>	<p>Ornamental deciduous tree which is highly invasive. Glossy, dark green, rounded leaves. White flowers bloom in spring and have an offensive odor.(Clemson University).</p>





(Loewenstein, N)

Callery pear  
(*Pyrus calleryana*)

Produces flowers with an offensive odor and produces large amounts of fruit that litter sidewalks. (USDA<sup>1</sup>, Penn State Extension<sup>1</sup>).



(Photo by Klingaman, G.)

Crimson king maple  
(*Acer platanoides* 'Crimson King')

Dense canopy of dark purple leaves that can appear black. Trees can reach 45 feet and has shallow roots (University of Arkansas).





(Photo by St. John, J)

Japanese angelica tree  
(*Aralia elata*)

Prohibited in NYS. Large shrub or small tree native to eastern Asia. In cultivation, it grows 10 to 20 feet tall. Produces white flower clusters and has sharp spines on the trunk and branches (NC State Extension<sup>1</sup>).



(Photo by Gentry, T)

Japanese pagoda tree  
(*Styphnolobium japonicum*)

The flowers are white, pea-like and hang, appearing in the fall and persisting through winter months. It is medium to large, with a rounded crown (NC State Extension<sup>2</sup>).





(Photo by Mehrhoff, L)

Norway maple  
(*Acer platanoides*)

Regulated in NYS. Norway maples have simple, green, and opposite leaves. Leaves of Norway maples usually are broader than they are high. Broad, dense canopy with milky petiole sap. Common street tree (New York Invasive Species Information<sup>1</sup>).



(Photo by Marlin, B)

Siberian elm  
(*Ulmus pumila*)

Fast-growing with small, serrated leaves and brittle branches. Tolerates harsh conditions but prone to disease (NC State Extension<sup>3</sup>).





(Photo by Picano, C)

Silver poplar  
(*Populus alba*)

Fast growing tree that grows up to 75 feet tall. The undersides of the leaves are a whiteish silver. The silver poplar is self-seeding and able to spread by the sucking roots (NC State Extension<sup>4</sup>).



(Photo from NC State Extension<sup>5</sup>)

Sycamore maple  
(*Acer pseudoplatanus*)

Prohibited in NYS. Reaches 40-60 feet with a broad rounded crown. Disperses through winged samaras (NC State Extension<sup>5</sup>).






(Photo from Jim Robbins<sup>2</sup>).

Japanese Maple

Leaves are 3 to 6 inches long and are lobed. Color of leaves may vary, green in summer and yellow, bronze, purple or red in the fall. Smooth bark (NCD State Extension<sup>26</sup>)



 <p>(Photo by Veljkovic, N)</p>	<p>Tree of heaven (<i>Ailanthus altissima</i>)</p>	<p>Small tree with long compound leaves, often with red stems. Host for spotted lanternfly (NC State Extension<sup>6</sup>).</p>
<p><b>Shrubs</b></p>		
 <p>(Photo by Ziarnek, K)</p>	<p>Autumn olive (<i>Elaeagnus umbellata</i>)</p>	<p>Prohibited in NYS. Long slender leaves, fragrant flowers, and red berries (NC State Extension<sup>7</sup>).</p>
 <p>(Photo from York County Conservation District)</p>	<p>Honeysuckle (<i>Lonicera spp.</i>)</p>	<p>Honeysuckles include a large group of bushy shrubs with fragrant flowers (Dubois, J and Blazich, F).</p>





(Photo by Tal, A)

Marrow's honeysuckle (*Lonicera morrowii*)

Leaves are simple leaves oppositely on branched stems. The yellow, white, sometimes pink flowers are produced with round red or orange berries (Cameron, S. and Wheeler, J).



(Photo by Slaughter, C)

Multiflora rose  
(*Rosa multiflora*)

Woody perennial, multi-stemmed rose shrub that forms dense thickets; thorny (NC State Extension<sup>8</sup>).



(Photo by Jackson, D)

Privet  
(*Ligustrum spp.*)

Leaves are simple, leathery, opposite leaves, approximately 1 to 3 inches long. Flower are white and trumpet-shaped (Penn State Extension<sup>3</sup>).





(Photo by Lavin, M)

Winged euonymus  
(*Euonymus alatus*)

Regulated in NYS. Woody, deciduous, multi-stemmed, large shrub. Leaves turn bright red in the fall. Stems have corky outgrowths (NC State Extension<sup>9</sup>).



(Photo from NC State Extension<sup>10</sup>)

Japanese barberry  
(*Berberis thunbergii*)

Prohibited in NYS. Dense, deciduous shrub with thorns, flowers, and reddish colors in the fall (NC State Extension<sup>10</sup>).



(Photo from Jim Robbins<sup>1</sup>)

Japanese holly  
(*Ilex crenata*)

Dence shrub or small tree with glossy leaves and black berries. Berries are toxic (NC State Extension<sup>11</sup>).



### Woody Vegetation/Vines



(Photo from Donald Hobern)

English ivy  
(*Hedera helix*)

Evergreen, high-climbing vine with glossy, lobed leaves. Blackish-blue berries which are present in the fall. Smothers trees and groundcover (NC State Extension<sup>12</sup>).



(Photo from Joey Williamson)

Greenbrier  
(*Smilax spp.*)

Thorny vine with heart-shaped leaves. Native but aggressive in disturbed areas (Clemson Cooperative Extension).



(Photo from Scott Zona)

Oriental bittersweet  
(*Celastrus orbiculatus*)

Prohibited in NYS. Deciduous vine with rounded and broad leaves and yellowish red berries (NC State Extension<sup>13</sup>).





(Photo from Lucy Bradley)

Poison ivy  
(*Toxicodendron radicans*)

Green yellowish and red leaves. "Leaves of three" with oily urushiol causing rashes (NC State Extension<sup>14</sup>).



(Photo from Lindley Ashline)

Porcelain berry  
(*Ampelopsis brevipedunculata*)

Prohibited in NYS. A deciduous, climbing, woody vine. Grape-like leaves with multicolored berries (NC State Extension<sup>15</sup>).






(Photo from Wouter Hagens)

Wineberry  
(*Rubus phoenicolasius*)

Prohibited in NYS. Deciduous, green leaves with hairy stems, juicy red berries, very thorny (NC State Extension<sup>16</sup>).



	<p>Wisteria (<i>Wisteria spp.</i>)</p>	<p>Woody vine with fragrant purple and white flowers that bloom in the spring (NC State Extension<sup>17</sup>).</p>
	<p>Common Periwinkle</p>	<p>Herbaceous broadleaf evergreen grows to approximately 3 to 6 inches high and 3 to 18 inches wide. Small blue-lavender flowers with dark green leaves (NC State Extension<sup>18</sup>).</p>
<p><b>Grasses</b></p>		
	<p>Arrow bamboo (<i>Pseudosasa japonica</i>)</p>	<p>Evergreen bamboo that grows in thickets. Hollow green cane that grows 12 to 16 feet tall with dark and glossy green leaves that are approximately 5 to 13 inches long and 1/ ¼ inches wide with pointed tips (Missouri Botanical Garden).</p>

(Photo from Ron Dicker)

(Photo from George Chernilevsky)

(Photo from Wayne Longbottom)





(Photo from Hans Hillewaert)

Bamboo  
(*Bambusoideae spp.*)

Fast-growing, hollow woody grass with long and slender leaves. Spreads aggressively. (Texas Tech University Plant Resources)



(Photo from J.C. Neal)

Japanese stiltgrass  
(*Microstegium vimineum*)

Pale green, sprawling grass with leaves that are approximately 1 to 3 inches in length and have silver midrib. Typically grows 1 to 3 feet tall, though it can reach up to 6 feet in height (Penn State Extension).



(Photo from USDA<sup>2</sup>)

Miscanthus  
(*Miscanthus spp.*)

Regulated in NYS. Ornamental grass with feathery plumes that grows to 3 to 10 feet tall. Leaf blades grow up to 3 feet long (USDA<sup>2</sup>).

**Herbaceous/Non-woody Vegetation**





(Photo from Dave Jackson)

Garlic mustard  
(*Alliaria petiolata*)

Prohibited in NYS. Smells like garlic, triangular leaves that are approximately 1 to 3 inches long and wide, white flowers (NC State Extension<sup>19</sup>).



(Photo from Leslie J. Mehroff)

Mile-a-minute  
(*Persicaria perfoliate*)

Triangular leaves that are approximately 1 to 3 inches long and wide. Stems are prickly (NC State Extension<sup>20</sup>).



(Photo from Joan Simon)

Mugwort  
(*Artemisia vulgaris*)

Prohibited in NYS. Green pinnately or bipinnately leaves that are up to 4 inches long and 2 1/2 inches wide. Leaves are pale underneath. Distinct smell and grows to approximately 3 feet high (NC State Extension<sup>21</sup>).





(Photo from Carl Lewis)

Pachysandra  
(*Pachysandra spp.*)

Evergreen carpet, approximately 1 to 3 inches wide white flowers that bloom in spring. Green, glossy leaves that are approximately 3 to 6 inches long (NC State Extension<sup>22</sup>).



(Photo from Cathy Dewitt)

Pokeweed  
(*Phytolacca americana*)

Bright green leaves that smell unpleasant. Grows to approximately 4 to 10 feet high and 3 to 5 feet wide. Purple berries on red stems (NC State Extension<sup>23</sup>).



(Photo from Terry English)

Giant hogweed  
(*Heracleum mantegazzianum*)

Prohibited in NYS. Grows up to 20 feet tall and leaves can grow to approximately 3-5 feet wide and are prickly. Large white flowers which bloom in summer and grow up to approximately 2.5 feet wide. Sap can result in severe burns caused by sensitivity to UV rays. **Report sightings immediately** (NC State Extension<sup>24</sup>).



## Invasive Animals Species Identification

### Insects



(Photo from USDA<sup>3</sup>)

Asian longhorned beetle  
(*Anoplophora glabripennis*)

Prohibited in NYS. Shiny with black with white spots, attacks and kills hardwoods. Body is about the size of an almond (USDA<sup>3</sup>).



(Photo from USDA<sup>4</sup>)

Gypsy moth  
(*Lymantria dispar*)

Prohibited in NYS. Hairy caterpillars with yellow to gray body with red and blue dots. Approximately 1.5 to 2.5 inches long at maturity. Defoliates oaks (USDA<sup>4</sup>).



(Photo from David R. Lance USDA, APHIS, Plant Protection and Quarantine)

Sirex woodwasp  
(*Sirex noctilio*)

Prohibited in NYS. Blueish-black wasp that is approximately 1 to 1.5 inches long at maturity. Burrows into pine trees which may result in the death of the tree (New York Invasive Species Information<sup>2</sup>).





(Photo from UMass Amherst Extension Landscape, Nursery and Urban Forestry Program)

Beech scale  
(*Cryptococcus fagisuga*)

Prohibited in NYS. Very small (less than 1 millimeter in size at maturity), yellow with white woolly material; spreads beech bark disease. Found on bark (UMASS Amherst Extension Landscape, Nursery and Urban Forestry Program)



(Photo from USDA<sup>5</sup>)

Spotted lantern fly (*Lycorma delicatula*)

Gray with black spots, red hindwings. Adults are approximately 1 inch long and ½ inch wide. Damages crops and hardwoods (USDA<sup>5</sup>).



(Photo from Steven Valley, Oregon Department of Agriculture)

Southern pine beetle  
(*Dendroctonus frontalis*)

Pine beetle destruction observed in one stand of dead pitch pines on The Edge of Woods Road, across from 409 Edge of Woods Road drive way. Small (approximately 1/8 inch long), brown and glossy with curved body; kills pines (NC State Extension<sup>25</sup>).



## REFERENCES

- Cameron, S. and Wheeler, J. August 2020. *Invasive Plant Profile: Morrow's Honeysuckle*. National Parks Service. Acadia National Park. <https://www.nps.gov/articles/morrows-honeysuckle.htm>.
- Carl Lewis. Photo. "*Pachysandra terminalis*". North Carolina Extension, North Carolina Extension Plant Toolbox. <https://plants.ces.ncsu.edu/plants/pachysandra-terminalis/>
- Cathy Dewitt. Photo. "*Stems*" (Warren County, NC) *Phytolacca americana* North Carolina Extension, North Carolina Extension Plant Toolbox. <https://plants.ces.ncsu.edu/plants/phytolacca-americana/>
- Clemson Cooperative Extension. *Smilax (Green Briar)*. Clemson Cooperative Extension, Home & Garden Information Center. <https://hgic.clemson.edu/factsheet/smilax-greenbrier/>
- Clemson University. N.D. *Bradford Pear Bounty*. Cooperative Extension. <https://www.clemson.edu/extension/bradford-pear/>
- Terry English. Photo. *Giant Hogweed*. Cornell Cooperative Extension Warren County, <https://warren.cce.cornell.edu/natural-resources/invasive-plants/giant-hogweed>
- Cornell University, Cope, J.A. and Winch Jr, F.E.. N.D. 29. *Black Locust*. <http://bhort.bh.cornell.edu/tree/blacklocust.htm>
- Dave Jackson. Photo. *Garlic Mustard*. Penn State Extension. <https://extension.psu.edu/garlic-mustard>
- Donald Hobern. Photo. *Hendra Helix*. NC State Extension, North Carolina Extension Gardener Plant Toolbox. <https://plants.ces.ncsu.edu/plants/hedera-helix/>
- Hans Hillewaert. Photo. *Bambusa spp.* Florida Natural Areas Inventory <https://www.fnai.org/species-communities/invasives/invasive-species?ID=177>
- Gentry, T. N.D. Photo. *Styphnolobium japonicum*. NC State Extension, North Carolina Extension Gardener Plant Toolbox. <https://plants.ces.ncsu.edu/plants/styphnolobium-japonicum/>
- George Chernilevsky. Photo. "*Vinca minor*". NC State Extension *Vinca Minor*. NC State Extension, North Carolina Extension Gardener Plant Toolbox. <https://plants.ces.ncsu.edu/plants/vinca-minor/>
- Jackson, D. March 2020. Photo. *Privet*. Penn State Extension. <https://extension.psu.edu/privet>.
- James H. Miller. Photo. *Miscanthus sinensis*. USDA Fire Effects Information System. <https://www.fs.usda.gov/database/feis/plants/graminoid/missin/all.html>
- J.C. Neal. Photo. *Japanese Stilt Grass*. Penn State Extension. <https://extension.psu.edu/japanese-stiltgrass>
- Jim Robbins<sup>1</sup>. March 2020. Photo. "*Twiggy*" *Form. Ilex crenata*. NC State Extension, North Carolina Extension Gardener Plant Toolbox. <https://plants.ces.ncsu.edu/plants/ilex-crenata/>
- Jim Robbins<sup>2</sup>. "*Gwens Rose Delight*" *Leaves Acer palmatum*. North Carolina Extension, North Carolina Extension Plant Toolbox. <https://plants.ces.ncsu.edu/plants/acer-palmatum/>
- Joey Williamson. Photo. *Smilax rotundifolia*. Clemson Cooperative Extension, Home & Garden Information Center. <https://hgic.clemson.edu/factsheet/smilax-greenbrier/>
- Joan Simon. Photo. "*Flowers*" *Artemisia vulgaris*. North Carolina Extension, North Carolina Extension Plant Toolbox. <https://plants.ces.ncsu.edu/plants/artemisia-vulgaris/>
- John Dubois and Frank Blazich. N.D. *Lonicera L.* USDA Forest Service. <https://www.fs.usda.gov/nsl/Wpsm/Lonicera.pdf>
- Klingaman, G. N.D. Photo. *Plant of the Week: Crimson King Maple*. University of Arkansas System, Division of Agriculture, Research & Extension. <https://www.uaex.uada.edu/yard-garden/resource-library/plant-week/crimson-king-maple-9-13-13.aspx>
- Lavin, M. Photo. *Euonymus alatus*. NC State Extension, North Carolina Extension Gardener Plant Toolbox. <https://plants.ces.ncsu.edu/plants/euonymus-alatus/>
- Leslie J. Mehroff. Photo. "*Stem and Leaves*" *Perisicaria perfoliata*. NC State Extension, North Carolina Extension Gardener Plant Toolbox. <https://plants.ces.ncsu.edu/plants/persicaria-perfoliata/>
- Lindley Ashline. Photo. *Ampelopsis glandulosa var. brevipedunculata*. NC State Extension, North Carolina Extension Gardener Plant Toolbox. <https://plants.ces.ncsu.edu/plants/ampelopsis-glandulosa-var-brevipedunculata/>
- Loewenstein, N. et al. August 2020. Photo. *Callery Pear: History, Identification, and Control*. Alabama Cooperative Extension System. <https://www.aces.edu/blog/topics/forestry-wildlife/callery-pear-history-identification-and-control/>
- Lucy Bradley. Photo. "*Leaves*" *Toxicodendron radicans*. NC State Extension, North Carolina Extension Gardener Plant Toolbox. <https://plants.ces.ncsu.edu/plants/celestus-orbiculatus/>
- Marlin, B. N.D. Photo. *Ulmus pumila*. NC State Extension, North Carolina Extension Gardener Plant Toolbox. <https://plants.ces.ncsu.edu/plants/ulmus-pumila/>



Missouri Botanical Garden. *Pseudosasa japonica*. Missouri Botanical Garden.  
<https://www.missouribotanicalgarden.org/PlantFinder/PlantFinderDetails.aspx?taxonid=285340>

NC State Extension<sup>1</sup>. N.D. *Aralia elata*. NC State Extension, North Carolina Extension Gardener Plant Toolbox.  
<https://plants.ces.ncsu.edu/plants/aralia-elata/>

NC State Extension<sup>2</sup>. N.D. *Styphnolobium japonicum*. NC State Extension, North Carolina Extension Gardener Plant Toolbox.  
<https://plants.ces.ncsu.edu/plants/styphnolobium-japonicum/>

NC State Extension<sup>3</sup>. *Ulmus pumila*. NC State Extension, North Carolina Extension Gardener Plant Toolbox.  
<https://plants.ces.ncsu.edu/plants/ulmus-pumila/>

NC State Extension<sup>4</sup>. N.D. *Populus alba*. NC State Extension, North Carolina Extension Gardener Plant Toolbox.  
<https://plants.ces.ncsu.edu/plants/populus-alba/>

NC State Extension<sup>5</sup>. N.D. *Acer pseudoplatanus*. NC State Extension, North Carolina Extension Gardener Plant Toolbox.  
<https://plants.ces.ncsu.edu/plants/acer-pseudoplatanus/>

NC State Extension<sup>6</sup>. N.D. *Ailanthus altissima*. NC State Extension, North Carolina Extension Gardener Plant Toolbox.  
<https://plants.ces.ncsu.edu/plants/ailanthus-altissima/>

NC State Extension<sup>7</sup>. N.D. Photo. *Elaeagnus umbellata*. NC State Extension, North Carolina Extension Gardener Plant Toolbox.  
<https://plants.ces.ncsu.edu/plants/elaegagnus-umbellata/>

NC State Extension<sup>8</sup>. N.D. *Rosa multiflora*. NC State Extension, North Carolina Extension Gardener Plant Toolbox.  
<https://plants.ces.ncsu.edu/plants/rosa-multiflora/>

NC State Extension<sup>9</sup>. *Euonymus alatus*. NC State Extension, North Carolina Extension Gardener Plant Toolbox.  
<https://plants.ces.ncsu.edu/plants/euonymus-alatus/>

NC State Extension<sup>10</sup>. *Berberis thunbergii*. NC State Extension, North Carolina Extension Gardener Plant Toolbox.  
<https://plants.ces.ncsu.edu/plants/berberis-thunbergii/>

NC State Extension<sup>11</sup>. *Ilex crenata*. NC State Extension, North Carolina Extension Gardener Plant Toolbox.  
<https://plants.ces.ncsu.edu/plants/ilex-crenata/>

NC State Extension<sup>12</sup>. *Hendra Helix*. NC State Extension, North Carolina Extension Gardener Plant Toolbox.  
<https://plants.ces.ncsu.edu/plants/hedera-helix/>

NC State Extension<sup>13</sup>. *Celastrus orbiculatus*. NC State Extension, North Carolina Extension Gardener Plant Toolbox.  
<https://plants.ces.ncsu.edu/plants/celastrus-orbiculatus/>

NC State Extension<sup>14</sup>. *Toxicodendron radicans*. NC State Extension, North Carolina Extension Gardener Plant Toolbox.  
<https://plants.ces.ncsu.edu/plants/toxicodendron-radicans/>

NC State Extension<sup>15</sup>. *Ampelopsis glandulosa* var. *brevipedunculata*. NC State Extension, North Carolina Extension Gardener Plant Toolbox.  
<https://plants.ces.ncsu.edu/plants/ampelopsis-glandulosa-var-brevipedunculata/>

NC State Extension<sup>16</sup>. *Rubus phoenicolasius*. NC State Extension, North Carolina Extension Gardener Plant Toolbox.  
<https://plants.ces.ncsu.edu/plants/rubus-phoenicolasius/>

NC State Extension<sup>17</sup>. *Wisteria*. NC State Extension, North Carolina Extension Gardener Plant Toolbox.  
<https://plants.ces.ncsu.edu/plants/wisteria/>

NC State Extension<sup>18</sup>. *Vinca Minor*. NC State Extension, North Carolina Extension Gardener Plant Toolbox.  
<https://plants.ces.ncsu.edu/plants/vinca-minor/>

NC State Extension<sup>19</sup>. *Alliaria petiolata*. NC State Extension, North Carolina Extension Gardener Plant Toolbox.  
<https://plants.ces.ncsu.edu/plants/alliaria-petiolata/>

NC State Extension<sup>20</sup>. *Persicaria perfoliate*. NC State Extension, North Carolina Extension Gardener Plant Toolbox.  
<https://plants.ces.ncsu.edu/plants/persicaria-perfoliate/>

NC State Extension<sup>21</sup>. *Artemisia vulgaris*. North Carolina Extension, North Carolina Extension Plant Toolbox.  
<https://plants.ces.ncsu.edu/plants/artemisia-vulgaris/>

NC State Extension<sup>22</sup>. *Pachysandra terminalis*. North Carolina Extension, North Carolina Extension Plant Toolbox.  
<https://plants.ces.ncsu.edu/plants/pachysandra-terminalis/>

NC State Extension<sup>23</sup>. *Phytolacca americana*. North Carolina Extension, North Carolina Extension Plant Toolbox.  
<https://plants.ces.ncsu.edu/plants/phytolacca-americana/>

NC State Extension<sup>24</sup>. *Heracleum mantegazzianum*. North Carolina Extension, North Carolina Extension Plant Toolbox.  
<https://plants.ces.ncsu.edu/plants/heracleum-mantegazzianum/>

NC State Extension<sup>25</sup>. *Southern Pine Beetle*. NC State Extension Entomology Insect Notes. <https://content.ces.ncsu.edu/southern-pine-beetle>

NC State Extension<sup>26</sup>. *Acer palmatum*. North Carolina Extension, North Carolina Extension Plant Toolbox.  
<https://plants.ces.ncsu.edu/plants/acer-palmatum/>



New York Invasive Species Information<sup>1</sup>. N.D. *Terrestrial Plant; Norway Maple*. <https://nyis.info/species/norway-maple/>

New York Invasive Species Information<sup>2</sup>. *Sirex Woodwasp*. <https://nyis.info/species/sirex-woodwasp/>

Oten, K. N.D. *Callery Pear: Bradford Pear, Other Varieties, and Their Invasive Offspring*. NC State Extension. <https://content.ces.ncsu.edu/callery-pear-bradford-pear-other-varieties-and-their-invasive-offspring>

Penn State Extension<sup>1</sup>. July 2020. *Callery Pear*. PennState Extension. <https://extension.psu.edu/callery-pear>.

Penn State Extension<sup>2</sup>. *Japanese Stilt Grass*. <https://extension.psu.edu/japanese-stiltgrass>

Penn State Extension<sup>3</sup>. March 2020. *Privet*. Penn State Extension. <https://extension.psu.edu/privet>

Picano, C. N.D. Photo. *Populus alba*. NC State Extension, North Carolina Extension Gardener Plant Toolbox. <https://plants.ces.ncsu.edu/plants/populus-alba/>

Richard, S. N.D. Photo. *Robinia pseudoacacia*. NC State Extension, North Carolina Extension Gardener Plant Toolbox. <https://plants.ces.ncsu.edu/plants/robinia-pseudoacacia/>

Ron Dicker. Photo. “Form” *Wisteria*. NC State Extension, North Carolina Extension Gardener Plant Toolbox. <https://plants.ces.ncsu.edu/plants/wisteria/>

Scott Zona. Photo. *Celastrus orbiculatus*. NC State Extension, North Carolina Extension Gardener. <https://plants.ces.ncsu.edu/plants/celastrus-orbiculatus/>

Slaughter, C. N.D. Photo. *Rosa multiflora*. NC State Extension, North Carolina Extension Gardener Plant Toolbox. <https://plants.ces.ncsu.edu/plants/rosa-multiflora/>

St John, James. N.D. Photo. *Aralia elata*. NC State Extension, North Carolina Extension Gardener Plant Toolbox. <https://plants.ces.ncsu.edu/plants/aralia-elata/>

Steven Valley, Oregon Department of Agriculture. Photo. “*The southern pine beetle*” NC State Extension Entomology Insect Notes. <https://content.ces.ncsu.edu/southern-pine-beetle>

Tal, A. 2025. Photo. Go Botany. <https://gobotany.nativeplanttrust.org/species/lonicera/morrowii/>

Taylor, D. N.D. *Plant of the Week*. USDA, U.S. Forest Service. <https://www.fs.usda.gov/wildflowers/plant-of-the-week/Robinia-pseudoacacia.shtml>

Texas Tech University Plant Resource Database, TTU Plant Resources. *Bamboo*. [https://www.depts.ttu.edu/plantresources/Pages/directories/landscape-info-sheets/woody-info/Bambusa\\_spp.php#prettyPhoto](https://www.depts.ttu.edu/plantresources/Pages/directories/landscape-info-sheets/woody-info/Bambusa_spp.php#prettyPhoto)

UMass Amherst Extension Landscape, Nursey and Urban Forestry Program. *Cryptococcus fagisuga*. <https://www.umass.edu/agriculture-food-environment/landscape/publications-resources/insect-mite-guide/cryptococcus-fagisuga>

University of Arkansas. N.D. *Plant of the Week: Crimson King Maple*. University of Arkansas System, Division of Agriculture, Research & Extension. <https://www.uaex.uada.edu/yard-garden/resource-library/plant-week/crimson-king-maple-9-13-13.aspx>

University of Connecticut, Mehrhoff, L. N.D. Photo. *Adult Norway maple tree*. <https://nyis.info/species/norway-maple/>

David R. Lance. Photo. USDA. APHIS. Plan Protection and Quarantine. *Sirex Woodwasp, Adult Female*. <https://www.invasivespeciesinfo.gov/terrestrial/invertebrates/sirex-woodwasp>

USDA<sup>1</sup>. May 2021. *Callery pear publication talks treatment, control*. U.S. Forest Service. <https://www.fs.usda.gov/inside-fs/delivering-mission/deliver/callery-pear-publication-talks-treatment-control>

USDA<sup>2</sup>. *Miscanthus sinensis*. USDA Fire Effects Information System. <https://www.fs.usda.gov/database/feis/plants/graminoid/missin/all.html>

USDA<sup>3</sup>. *Asian Longhorned Beetle*. Animal and Plant Health Inspection Service. <https://www.aphis.usda.gov/plant-pests-diseases/alb>

USDA<sup>4</sup>. *Spongy Moth*. USDA Animal and Plant Health Inspection Service. <https://www.aphis.usda.gov/plant-pests-diseases/spongy-moth>

USDA<sup>5</sup>. *Spotted Lanternfly*. USDA Animal and Plant Health Inspection Service. <https://www.aphis.usda.gov/plant-pests-diseases/slf>

Veljkovic, N. N.D. Photo. *Ailanthus altissima*. NC State Extension, North Carolina Extension Gardener Plant Toolbox. <https://plants.ces.ncsu.edu/plants/ailanthus-altissima/>

Wayne Longbottom. Photo. *Arrow Bamboo in Caroline Co., Maryland (2/26/2021)*. Arrow Bamboo. Maryland Biodiversity Project. <https://www.marylandbiodiversity.com/species/4111>

Wouter Hagens. Photo. *Rubus phoenicolasius*. NC State Extension, North Carolina Extension Gardener Plant Toolbox. <https://plants.ces.ncsu.edu/plants/rubus-phoenicolasius/>

York County Conservation District. N.D. Photo. *2.-Identification-Pages-For-Invasive-Plant-Species-List.pdf*. <https://www.yorkccd.org/wp-content/uploads/2023/09/2.-Identification-Pages-for-Invasive-Plant-Species-List.pdf>

Ziamek, K. N.D. Photo. *Elaeagnus umbellata*. NC State Extension, North Carolina Extension Gardener Plant Toolbox. <https://plants.ces.ncsu.edu/plants/elaegagnus-umbellata/>